

Technical Specifications

Section thickness:

- Setting range: 1– 60 μm
- Setting values: 0,5 - 2 μm in 0,5 μm increments
- 2 - 10 μm in 1 μm increments
- 10 - 20 μm in 2 μm increments
- 20 - 60 μm in 5 μm increments

Horizontal specimen feed: approx. 25 mm

Vertical stroke: 60 mm

Specimen orientation: Horizontal : 8"
Vertical: 8"

Maximun specimen size: W 50 x H 66 x D 30 mm

Dimensions:

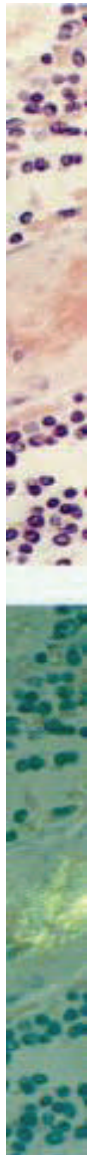
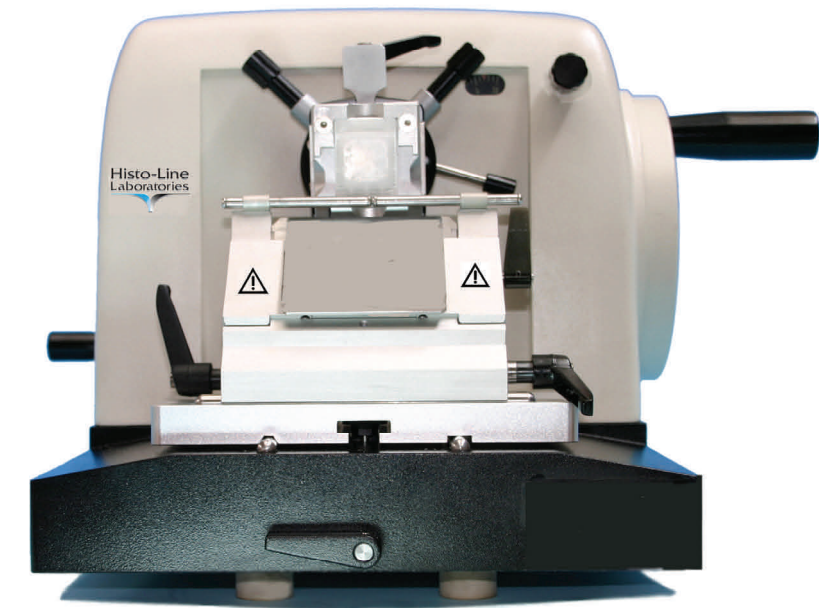
- Width (including handwell): 400 mm
- Depth (including wate tray): 600 mm
- Height: 300 mm
- Weigth: 34 Kg



Distributed by:



Via Brembo, 27 - Milano Italy Tel: +39 0255230061 Fax: +39 0255213764 Email: histoline@histoline.com URL: www.histoline.com



MR 2258

Manual Rotary Microtome

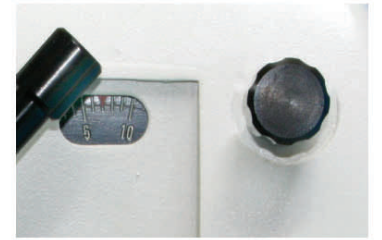


MR 2258

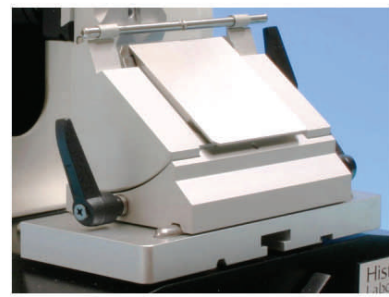
Manual Rotary Microtome



Precise orientation mechanism makes easy to adjust the specimen to the right position on the x/y axis

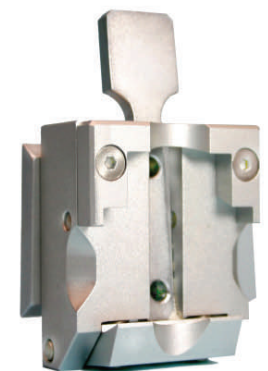


The sample thickness can be set easily by using the precision setting knob



Lateral blade holder adjustment. The entire width of blades can be used without release the blade clamp.

Large sections waste tray



Universal fast release cassette clamp, suitable for all type of embedding cassettes or rings



Want More Information ? www.histoline.com